

# ACAT Conference 2024

---

Sponsored by:



The logo for National Churches Trust is centered on a solid red background. It features the words "NATIONAL" and "CHURCHES" in a large, bold, white, sans-serif font, stacked vertically. A thin white horizontal line is positioned directly below "CHURCHES". Below the line, the word "TRUST" is written in a smaller, white, sans-serif font. The entire text is enclosed within a thin white circular outline.

**NATIONAL  
CHURCHES**  

---

**TRUST**

The image shows the interior of a church, featuring a series of stone arches supported by columns. The architecture is characterized by a repeating pattern of pointed arches and columns, creating a sense of depth and perspective. The lighting is warm and focused on the arches, highlighting their texture and structure. In the background, a stained glass window is visible through an opening in the arches.

**NATIONAL  
CHURCHES**  
TRUST

**We want to keep churches  
open and in use**

**Yours** for good.

# Our Strategy: For Churches

**For Churches**  
Our vision is that church buildings across the UK are well maintained, open for everyone, sustainable and valued



**Our strategy 2023-2026**  
Our mission is to keep the UK's wonderful collection of church buildings well maintained, valued and in use

**Be straightforward**   **Provide support**   **Join forces**   **Drive change**

**Build Up: Churches are well maintained, adaptable and in good repair**

- Establish a network of specialist local officers across the UK
- Position ourselves as a leading conduit and partner of choice for funding church buildings
- Deliver many small grants for church building projects across the UK that bring impact and sustainability
- Help churches prioritise environmental improvements to meet targets
- Resource churches and support volunteers

**Open Up: Churches are sustainable, open and welcoming**

- Show the need for vibrant, locally centred churches
- Create and develop a mutually beneficial church membership
- Help churches to meet community needs, and understand how to better serve visitors
- Be the first place to discover brilliant churches to visit
- Recognise the value of church buildings and volunteers

**Speak Up: Church buildings are valued and supported**

- Put research and evidence-based data at the centre of our work
- Speak on behalf of churches nationally and regionally
- Champion the case for church buildings through focussed external communications
- Work with partners to align around a common campaign
- Mobilise our Friends and supporters to create an effective network



A photograph showing three construction workers on a roof. They are wearing safety gear: orange high-visibility suits, helmets, and harnesses. They are working on a complex structure of silver metal scaffolding that is being erected over a roof. The roof has a grey shingle pattern. In the background, there are green trees and a stone wall. The overall scene is bright and sunny.

**NATIONAL  
CHURCHES  
TRUST**

# The House of Good

# The House of Good – A Foundation

**The UK's churches, chapels and meeting houses are some of the most beautiful and historic buildings in the world. These buildings have huge value for local people and communities.**

**The National Churches Trust is the UK wide charity that supports churches, of all denominations, that are used for worship, keeping them in good repair, being used and open for all.**

**The House of Good is our programme of research which is quantifying the economic and social value of churches to the UK.**

**Commissioned by the National Churches Trust, research is carried out by economic and data analysts State of Life.**

**This research is important as it allows us to make the case for church buildings to Government, to heritage organisations, to funders and to the public.**



# The House of Good

The first report published in early 2020, followed the approach of HM Treasury's The Green Book. Calculating both market and non market value, it showed that the economic and social value of church buildings to the UK was £12.4 billion.

In November 2021, following changes to the way the Government measures wellbeing, the value was re-calculated to be £55 billion.

The non market value was calculated examining only four activities that take place in church buildings; food banks, youth groups, drug and alcohol addiction support groups and mental health counselling.

That means that even the £55 billion figure is likely to be a conservative calculation of the benefits created by church buildings.

THE  
HOUSE  
OF  
GOOD



THE HOUSE  
OF GOOD

UPDATE 2021

The economic and social value  
of church buildings to the UK

STATE  
OF LIFE

NATIONAL  
CHURCHES  
TRUST

For people who love church buildings

# The House of Good: Local

The House of Good calculated that the average economic and social value of a church is around £1.3 million (calculated using the the most recent methodology used by Government to measure well-being).

The House of Good: Local will allow individual churches to calculate a more exact value of the economic and social good they deliver to the local community.

Using a simple to use online calculator, a church will input the community and support services they provide and the number of attendees for each activity and the number of volunteers involved.

The House of Good: Local will calculate the wellbeing value of these activities, using HM Treasury Green Book wellbeing valuation methodology.

This can also be used to demonstrate their value to local councils, to the local voluntary sector and to parishioners. It can also be help with fundraising to show the social value of a church



BENEFACT TRUST

NATIONAL  
CHURCHES  
TRUST

# The House of Good: Local

NATIONAL CHURCHES TRUST

## National Churches Trust Social Value Calculator

Enter your Organisation name and email to get started.

Organisation name

St Norman's

Organisation logo

Upload an Image to use with this Calculation

Email

karl.newton@nationalchurchestrust.org

Denomination

Church of England

Diocese/Grouping

Church of England: Diocese of London

Grade of listing or not listed?

Grade II

Rural or Urban?

Urban

Year of most recent grant from National Churches

Select option

Address Line 1

7 Tufton Street



# The House of Good: Local -

## Questions

- Total number of attendees at the main service on a typical Saturday/Sunday
- Average annual church expenditure
- Total number of regular volunteers in a year (i.e., who volunteer at least once a month)
- Total number of people who participate in the choir or a music group regularly (at least once a month)
- Total number of people who attend a community group (at least once a month)
- Total number of people who attend drug/alcohol support sessions regularly (at least once a month)
- Total number of people who use the foodbank regularly (at least once a month)
- Total number of people who attend mental health support sessions regularly (at least once a month)
- Total number of people who attend a youth group regularly (at least once a month)



# The House of Good: Local

G) Total number of people who use the food bank regularly (at least once a month) or for whom the food bank played a crucial part in hunger relief £16,480.00  
[Edit Offer](#)

Foodbanks

Foodbanks: "Total number of people who use the food bank regularly (at least once a month) or for whom the food bank played a crucial part in hunger relief"

Number of People Supported Conversion

Great British Pound

Clear  $(5 \times 3,296.00) = \text{£}16,480.00$

Further information - this is not a requirement but will appear on your pdf should you want provide any

0 / 1500

Upload evidence (optional)

Add files and images(s)



# The House of Good: Local

I) Total number of young people who attend the youth group regularly (at least once a month) £27,460.00  
[Edit Offer](#)

Youth groups and activities

· Youth Groups: "Total number of young people who attend the youth group regularly (at least once a month)"

Number of People Attended	Conversion
<input type="text" value="10"/>	Great British Pound
Clear	(10 × 2,746.00) = £27,460.00

Further information - this is not a requirement but will appear on your pdf should you want provide any

0 / 1500

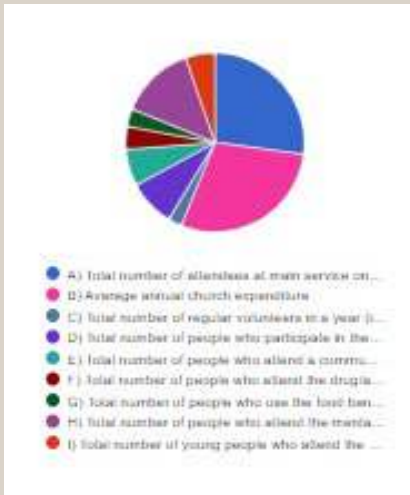
Upload evidence (optional)

Add files and images(s)





# The House of Good: Local



## National Churches Trust Social Value Calculator

Supplier: St Norman's  
Status: submitted

Social Value Committed  
**£516,975.00**

### Calculation Summary

REF	Activity	Classifications	Proxy Value	Unit	Social Value No.	Social Value ESVA (SV * PV)	Description
Church attendance	A) Total number of attendees at main service on a typical Saturday/Sunday	• ∴ Church attendance: "Total number of attendees at main service on a typical Saturday/Sunday"	3509	Number of People Attended	40	140360	
Expenditure	B) Average annual church expenditure	• ∴ Expenditure: "Average annual church expenditure"	1	Number of £'s Spent	150000	150000	
Volunteers	C) Total number of regular volunteers in a year (i.e. who volunteer at least once a month)	• ∴ Volunteering: "Total number of regular volunteers in a year (i.e. who volunteer at least once a month)"	867	Number of People Volunteered	15	13005	
Choirs / music groups	D) Total number of people who participate in the choir or a music group regularly (at least once a month)	• ∴ Choirs/music groups: "Total number of people who participate in the choir or a music group regularly (at least once a month)"	1454	Number of People Participated	30	43620	

### Activity

- A) Total number of attendees at main service on a typical Saturday/Sunday
- B) Average annual church expenditure
- C) Total number of regular volunteers in a year (i.e. who volunteer at least once a month)
- D) Total number of people who participate in the choir or a music group regularly (at least once a month)
- E) Total number of people who attend a community group regularly (at least once a month)
- F) Total number of people who attend the drug/alcohol support sessions regularly (at least once a month) and successfully overcome their addiction
- G) Total number of people who use the food bank regularly (at least once a month) or for whom the food bank played a crucial part in hunger relief
- H) Total number of people who attend the mental health support sessions regularly (at least once a month) and experience an improvement in their mental health outcomes
- I) Total number of young people who attend the youth group regularly (at least once a month)

### Target Value £

40 people	140360
150000	150000
15 people	13005
30 people	43620
25 people	34325
5 people	21435
5 people	16480
10 people	70290
10 people	27460
	516975

# The House of Good: Health

In October 2024, we published the second The House of Good report. This has a specific focus on healthcare.

**The House of Good: Health shows that churches provide essential health-related support services that would cost billions of pounds a year to deliver**

**From youth groups to food banks, from drug and alcohol addiction support to mental health counselling, churches directly provide or host a growing list of vital health related services for people in urgent need.**

**In the process, churches relieve huge cost pressures on the National Health Service, worth an estimated £8.4 billion each year. That's the equivalent to the cost of employing 230,000 nurses. (The £8.4 billion also includes the wellbeing to volunteers who help to deliver many of the health-related support services).**

**The £8.4 billion is how much it would cost the NHS to produce the same level of health improvements provided by churches, equivalent to around 4% of total UK public health spending.**



# The House of Good: Health

## OUR NATIONAL HELP SERVICE IS ON LIFE SUPPORT

**There are around 38,500 churches in the UK. None gets guaranteed funding. They all rely on charity.**

With no long-term strategic national or government funding, church buildings are falling into disrepair and facing closure at a record rate.

In fact, in the past 10 years alone, more than 3,500 churches in the UK have closed.

For the Church of England alone, the backlog of repairs is at least £1 billion, and the annual need is estimated to be £150 million a year.

Many churches in the greatest danger of closing are in the country's most disadvantaged areas. This means they serve some of the most vulnerable communities in our society.

If they close, the impact on the health and wellbeing of these communities would be huge. The burden on councils and a stretched NHS would be severe.

**We need to save them for the future. Now.**

**EVERY YEAR, CHURCH BUILDINGS RELIEVE COSTS AND SUPPORT THE NHS BY AN ESTIMATED**

**£8.4BN**

**This is a conservative valuation.**

In reality, churches provide a much wider range of support, from warm spaces and lunch clubs to activities that alleviate loneliness, and a host of musical and cultural activities. All of these can be expected to contribute to health and wellbeing, and thus further relieve costs.



# How you can help:

1. When we launch the House of Good Local Calculator, use it
2. Get a copy of House of Good Health & watch our video: <https://www.nationalchurchestrust.org/house-good-health>
3. Use the information. Spread the word.
4. Join as a Friend
5. Write to your MP
6. Help us in future projects: 2025 National Research Project being planned

Karl Newton: Deputy CEO National Churches Trust:  
[karl.newton@nationalchurchestrust.org](mailto:karl.newton@nationalchurchestrust.org)

## INVEST IN THE NATIONAL HELP SERVICE

**It's vital that we keep churches open and use them more.**

'Every Church Counts', our six-point plan to save church buildings, calls on all local authorities and public bodies, such as the NHS, to engage with faith groups, and to make more use of churches and church halls to host public and community services, helping to upgrade facilities where needed. The UK Government should encourage public bodies to engage in this way.

The Faith Covenant, an initiative of the All-Party Parliamentary Group on Faith and Society, offers a good framework for open, practical working. More local authorities should adopt the Covenant.

To help keep the UK's churches open and serving local people additional ring fenced annual public funding of at least £50 million is required for major repairs, with proportionate funding provided for the devolved administrations. It is also vital that the Listed Places of Worship Grants Scheme, which allows listed churches to reclaim the VAT on repairs, is extended beyond 2025.

Please use this report to show local authorities and the NHS the value churches bring to your community by applying its national findings to your church, chapel or meeting house.

Get involved today at  
[nationalchurchestrust.org/thehouseofgoodhealth](https://nationalchurchestrust.org/thehouseofgoodhealth)

**For centuries, churches have supported the health and wellbeing of local communities.**

In 2023, The National Churches Trust was able to help over 250 church building projects with funding of over £2 million.

We can do much more with your help. So please:

### BECOME A FRIEND

As a Friend of the National Churches Trust, you'll help us protect even more church buildings. Choose from individual, joint or lifetime membership.

▶ [nationalchurchestrust.org/membership](https://nationalchurchestrust.org/membership)

### MAKE A DONATION

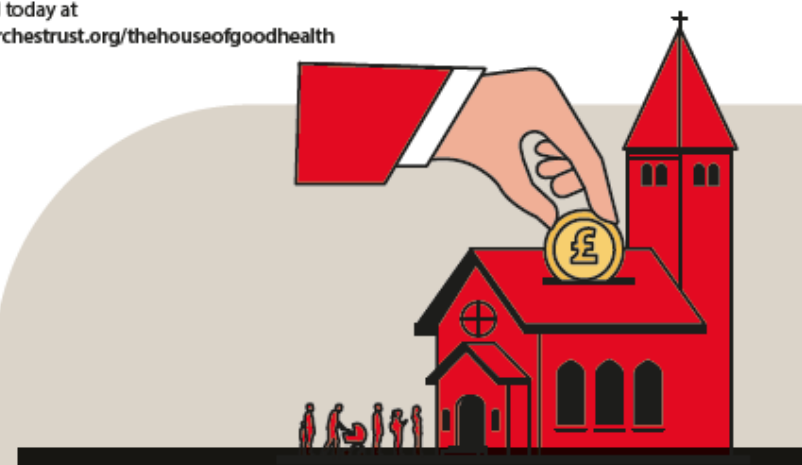
A one-off or monthly gift will fund community facilities and essential maintenance – and ensure more church buildings remain at the heart of their local communities.

▶ [nationalchurchestrust.org/donate](https://nationalchurchestrust.org/donate)

### STAY CONNECTED

Sign up for our e-newsletter and find us on social media to see more about how we're saving the UK's church buildings.

▶ [nationalchurchestrust.org/enews](https://nationalchurchestrust.org/enews)



# ACAT Conference 2024

---

Sponsored by:

